

Our Cloud Services



The logo consists of a blue square on the left containing a white letter 'E'. To its right is a smaller blue square containing a white stylized 'S' or 'X' symbol.

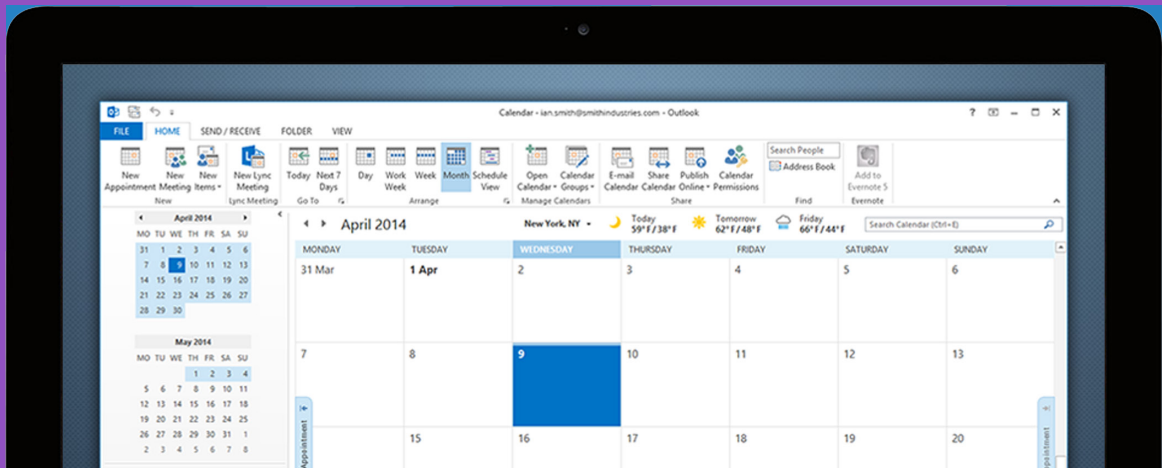
Hosted Exchange 2013

As a business professional you're under pressure to cut costs, streamline your business and become more productive and efficient, whilst making yourself more available to clients and colleagues. Our Hosted Exchange gives you just that, on a platform that guarantees you a safe and secure environment.

- ✓ Reduced IT infrastructure costs
- ✓ Instant deployment
- ✓ Enhanced security
- ✓ No upgrade or repairs
- ✓ Exchange 2013
- ✓ Massive 50GB per mailbox
- ✓ Mobile email 'push' technology
- ✓ Shared calendars and contacts

Improve your communications

Hosted Exchange gives you the opportunity to build on your customer service and business efficiency by enabling you to contact, collaborate and share wherever you are and whenever you need to.



The logo consists of a blue square with a white 'E' on the left and a white 'X' on the right, both with a slight 3D effect.

Advanced Security

Designed exclusively for your Hosted Exchange mailboxes

Using award-winning technology, Advanced Security increases the power and functionality of the embedded Anti-Spam and Anti-Virus service, and adds secure message archiving for analysis, compliance and email recovery. With our Advanced Security you can look forward to:

- ✓ Available in your control panel
- ✓ 99.9% enterprise-class email filtering
- ✓ Secure archiving for up to 10 years
- ✓ Choose filtering alone, or plus archiving
- ✓ Enable on a per-mailbox basis
- ✓ Fully-hosted service
- ✓ No software to install or maintain

Increased protection

Advanced Security adds an additional layer of protection against spam and virus threats, ensuring that +99% of all spam is identified and removed before it reaches your Hosted Exchange mailbox.

Instead of being deleted, spam is quarantined for 14 days where you can inspect and re-send messages you wish to receive using the Advanced Security online interface.





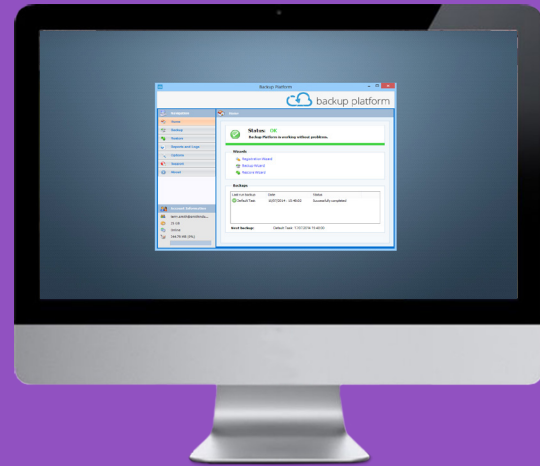
Hosted File Backup

Your most important business asset is data. Imagine if this was lost - what would happen? And how can this be prevented? With our Hosted File Backup you can look forward to automatic, 100% secure cloud based data back-up, without the need for unsightly and unreliable in-house servers.

- ✓ Backs up desktops & servers
- ✓ Suitable for any operating system
- ✓ Optimal security
- ✓ Guaranteed Data Protection
- ✓ Automatic reports, easy monitoring
- ✓ Easily restored
- ✓ No initial investment

Secure your data

Our Hosted File Backup offers powerful authentication capabilities, ensuring that only authorised parties are able to access your data. Hosted File Backup uses excellent security techniques to ensure that backed-up data is 100% private and not accessible to anyone but you.



The logo for Hosted SharePoint features a blue square with a white 'S' on the left, and a blue circular icon with three nodes connected by lines on the right. To the right of the icon is the text 'Hosted SharePoint' in a grey sans-serif font.

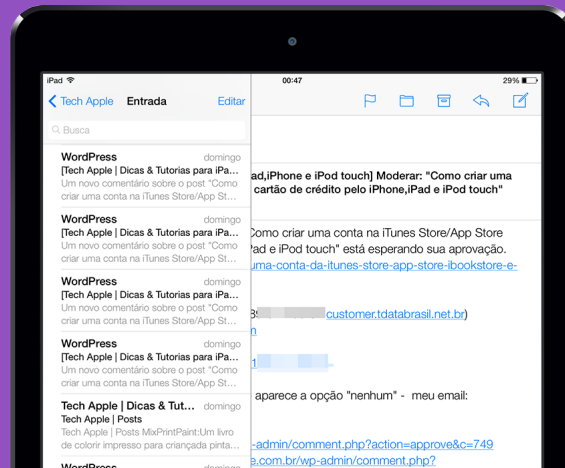
Hosted SharePoint

In today's business you need to be able to access files and documents from multiple locations - whether you're in the office, at home or working on the road, giving you business continuity and increasing efficiency. Our Hosted SharePoint is the solution for your business.

- ✓ Work from multiple locations
- ✓ Share files with clients
- ✓ Track work/versions
- ✓ Document FAQ's
- ✓ Allocate internal permissions
- ✓ Manage team discussions
- ✓ Collate feedback

Bring your business together

Our Hosted SharePoint makes it easier for people in business to work together by sharing information, managing projects and collaborating documents online utilising cloud technology.



The logo for Office 365, featuring a stylized orange square with a white window-like cutout on the left side.

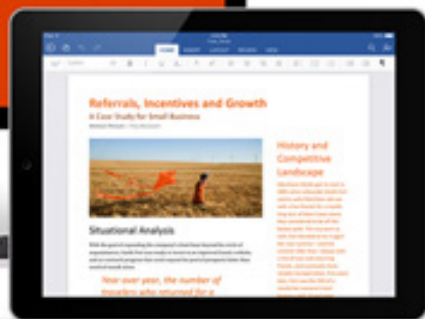
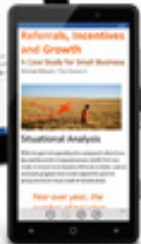
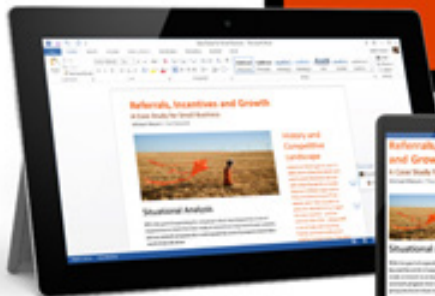
Office 365

Office 365 is a cloud-based service hosted by Microsoft that brings together familiar Microsoft Office desktop applications with business-class email, shared calendars, instant messaging (IM), video conferencing and file sharing.

Packages available are:

- ✓ Business Essentials
- ✓ Business
- ✓ Business Premium
- ✓ Enterprise E1
- ✓ Enterprise ProPlus
- ✓ Enterprise E3

Other packages are available upon request.



For more info about our services get in touch...

Tel: 01535 692008

Email: sales@intrica.net

Web: www.intrica.net

Intrica, 1a Chapel Lane, Keighley, West Yorkshire, BD21 2AJ

